

[www.cortencare.eu](http://www.cortencare.eu)  
[info@cortencare.eu](mailto:info@cortencare.eu)  
+32 495 400 964

# PROTECT YOUR PROJECTS

The patina of weathering steel looks beautiful but is very delicate. To protect it from the elements, a good sealer should be used. CortenCare offers a complete solution for preparation and protection of corten / weathered steel.





# CT7571-W

## Corten / Weathering Steel Sealer

CT7571-W is a water-based sealer made for Corten / Weathering Steel.

Being water based makes it the most environmentally friendly option and causes less harm whilst offering all the same protection and sealing properties with the addition of alcohol protection.

It benefits from being low odor and is perfect for application internally and in confined spaces. It is white in liquid form which aids visual application and it dries to a crystal clear, hard wearing finish.

CT7571-W is the world's longest lasting and most effective coating that protects corten / weathering steel from continuing to corrode and weather. The coating protects steel from UV, oxidation, bleaches and acids to ensure the desired patina remains perfect for the lifetime of the coating.

CT7571-W can be used in combination with XL-08 Corten Steel Accelerator to speed up the patination process and ERW-BD Biodegradable Degreaser to achieve a perfect result.

We have installations all over the world in many and varied environments from hot arid deserts UAE to freezing conditions in North America and Canada.



# Key Benefits



Better coverage rate



100% waterproof



No more run-off on your floors



Built in antioxidants to ensure no further corrosion.



Resistant to Acids, Bird droppings, Bleaches, and Acid rain.



Guaranteed not to crack, peel or fade.



Guaranteed up to 5 years and can be maintained indefinitely



Built in protection against UV for both the coating and the surface.

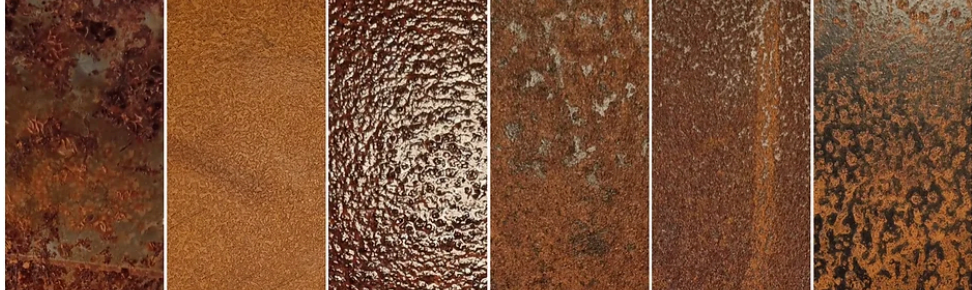


Dries crystal clear and virtually invisible to the naked eye.

- Better textured finish
- Lighter colour finish
- Perfect for indoor and outdoor applications



# Finish options



The various finishes are achieved in three ways:

## 1. Preparation of the metal.

Raw, sand blasted, scrubbed or grinded.

The lighter finishes are achieved when the surface has been sand or shot blasted.

The more textured finishes are achieved when the surface has been roughed or grinded.

## 2. Length of time XL-08 is left to dwell.

This usually is 1 to 10 days.

The longer the XL-08 is reactivated with a saline solution the deeper the oxidation.

Or the longer it is left to naturally rust up to 6 months.

The accelerator XL-08 will work on mild steel, tin and carbon steel, creating the rust patination desired which then can be sealed with the CT7571W.

## 3. Coating depth.

Gloss or natural finish is achieved via coating.

A thin coat will achieve the natural finish and additional or thicker coats will achieve a gloss finish. The coating is white in its liquid state. This acts as a visual indicator of the coating thickness during application.

For natural finishes, the surface should only look wet and not milky or white. For a deep or shiny finish, the milky white should be visible, however this will cure to be crystal clear.

You can experiment with the above to achieve your desired finish.

# Use Cases



## Run off

Run off is probably the first main reason for sealing the finish as surrounding areas become stained very quickly and require regular washing and acid cleaning.

CT7571-W eliminates run off.



## Mechanical damage

The picture shows how the patina has been damaged by the window cleaners boot tips. The contractor has contacted us as they have been unable to remove the scars in the patina.

CT7571-W protects against mechanical damage.



## Graffiti and bird droppings

Graffiti and bird droppings are impossible to remove without marking or disturbing the patina.

CT7571-W leaves an easy clean, solvent resistant finish, normally only requiring soap and water without disturbing the patina.



# Use Cases



## Damage during construction works

All too often weathering steel elements are installed while construction is ongoing resulting in contamination of the patina that can be almost irreversible such as concrete splashes and other building materials as well as impacts from construction vehicles.

CT7571-W will protect against all these elements and should be applied as soon as the installation is complete.

# Application instructions

## XL-08 Corten / Weathering steel rust acceleration

XL-08 rust accelerator will reduce waiting time to hours rather than weeks or months. Specifically designed for Corten / Weathering steel, it is also highly effective on mild steel or any other carbon steel.

The compound can be sprayed onto the surface and left as long as needed to create the desired patina. Once accelerated to the desired patina, the Corten / Weathering Steel can be sealed with CT7571-W.

Always ensure to neutralize XL-08 with ERW-BD before applying the CT7571-W.

### Application of XL-08

Please read the safety data and use the recommended PPE instructed on the label. Avoid contact with skin and eyes and wear protective gloves and eyewear. XL-08 may cause temporary skin bleaching. This will pass in approximately 30 minutes.

#### Step 1

Prepare surface to remove any protective oil or films with soapy water using cloth or scouring pad.

Various finishes may be achieved by different surface preparations such as, sandblasting, grinding or sanding the surface prior to application of the XL-08 solution.

#### Step 2

Apply XL-08 with a hand pump spray, trigger spray or similar. Ensure that all surfaces are saturated.

Note: the position of the surface being treated (horizontal, vertical, other) will affect the patination.

#### Step 3

Leave to dwell. The XL-08 will start reacting within 2 to 3 minutes. XL-08 will foam and bubble.

#### Step 4

DO NOT ALLOW TO DRY. Keep wet using a saltwater solution via pump spray. Keep checking the level of patina until desired level is achieved.

#### Step 5

Rinse thoroughly with fresh clean water to reveal the finish. If not satisfied with the level of patina, then repeat the application of XL-08 from step 2.

#### Neutralization of XL-08

- Rinse and wash down with ERW-BD solution ensuring that all reveals and folds are treated.
- No need to scrub or brush.
- Allow to dwell for 5 minutes.
- Fully rinse off ERW-BD with fresh running water.
- Allow to dry thoroughly and completely prior to application of CT7571-W.



# Application instructions

## Sealing with CT7571-W

### Preparation

#### Step 1

Wash down with a diluted solution of ERW-BD (Do NOT scrub the surface).  
Rinse thoroughly with fresh water and allow it to fully dry.

#### Step 2

Ensure that the level of rusting/browning is at an acceptable level as once the CT7571-W is applied the rusting process will be halted.

#### Step 3

Using a DRY paint brush. Carefully brush the entire structure to remove loose particles and dust. DO NOT USE any abrasives. You will not be able to remove all particles, but this is ok.

#### Step 4

Fully inspect the structure to ensure you are happy with the appearance.  
If not: Do not proceed to application of CT7571-W.

Re-place the structure in the environment used to allow rust to form (for example: XL-08).  
When happy with the finish, revert to step 1.



# Application instructions

## Application method and process

It is important, with all application methods, to not over apply. The surface should look wet but not creamy or white.

### Application notes:

- Upon application the finish will darken until drying/curing occurs
- Should any areas be missed, they can be touched up with the same method after application has been completed.
- A single coat of CT7571-W is normally sufficient unless thinned excessively.
- Application of a second coat will make the finish glossier if required.

## Cloth Method

### You will need:

- Painter metal bucket
- Lint free cloths
- CT7571-W Coating
- Chemical safe protective gloves.

### Process

- A. Put an amount of CT7571-W into a clean painter's pail.
- B. Drop 2 Lint free cloths into the bucket and allow the cloths to soak up the coating.
- C. Make both lint free cloths into a ball and squeeze out excess coating.
- D. Apply the coating via a dabbing motion.
- E. DO NOT Drag or wipe as this will disturb the patterning of the finish.

## Paint Roller method

### You will need:

- Painter roller tray
- Paint rollers
- CT7571-W Coating
- Chemical safe protective gloves.

### Process

- A. Fill the roller tray with CT7571-W.
- B. Soak the roller thoroughly with coating and squeeze out with your hand several times to remove all air from the roller. Failure to remove all air will result in bubbles appearing in the coating which may spoil the finish.
- C. Apply quickly with roller in several directions.
- D. Do not concentrate on a single area for more than 60 seconds.
- E. Keep the roller fully loaded with coating.



# Application instructions

## HVLP spray coating

Please follow the HVLP unit's manufacturer's instructions.

The CT7571-W coating may be thinned with water to reduce the viscosity if required.

Note: if thinned, a second coat may be required.

## Testing the Finish

Once fully cured, wipe the surface with a white cloth to check for any leaching. If leaching is experienced, then apply a 2nd light coat to complete the seal.



# Aftercare instructions

Corten steel can be maintained easily and kept up indefinitely, now that it is protected with CT7571-W coating.

CT7571-W coatings will expand and contract with the metal and will provide extreme protection against corrosion, oxidation, tarnish, rust, acid rain, bird droppings acid and much more.

However, the surface should be protected from solvents and abrasion.

To clean a surface protected with CT7571-W just rinse with water. A solution of mild soap and water can be used if the surface is noticeably dirty. Be sure to rinse the soap off with plenty of clean water. Washing up liquid or similar cleaners can be used ensuring they do not contain petroleum distillates.

## **What to avoid:**

There are cleaners which contain solvents or petroleum distillates that should not be used on the protected surface. Watch out for "orange" cleaners that usually contain d-limonene which is a solvent. You will also want to avoid abrasion.

There is no reason to scrub the coated surface with scratchy cleansers like Cif or with scratch pads. If the coating does get scratched, it can easily be touched up.

CT7571-W will protect the metal from bleaches, acids, bird droppings and other corrosives.

When washed the surface should be dried with a soft cloth.

Dirt and dust may settle on the protected surface but will not penetrate the clear finish and can easily be removed.

The protected metal will repel water and should bead up when wet.

Do not rinse off in the direct sun, especially if you have hard water, or you may get water spots.

If some tougher dirt or bird "deposits" get on the surface, you may need to use a soft brush with water.

**Power-washing should never be necessary.**

# Warranty

The 5-year warranty is that the coating will not crack, peel or discolor as it remains flexible for its lifetime. This warranty is subject to correct maintenance and application.

# Contact Information

[www.cortencare.eu](http://www.cortencare.eu)

[info@cortencare.eu](mailto:info@cortencare.eu)

+32 495 400 964

